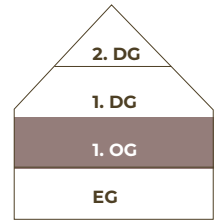
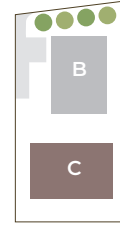


# HAUS C



**WHG C101**

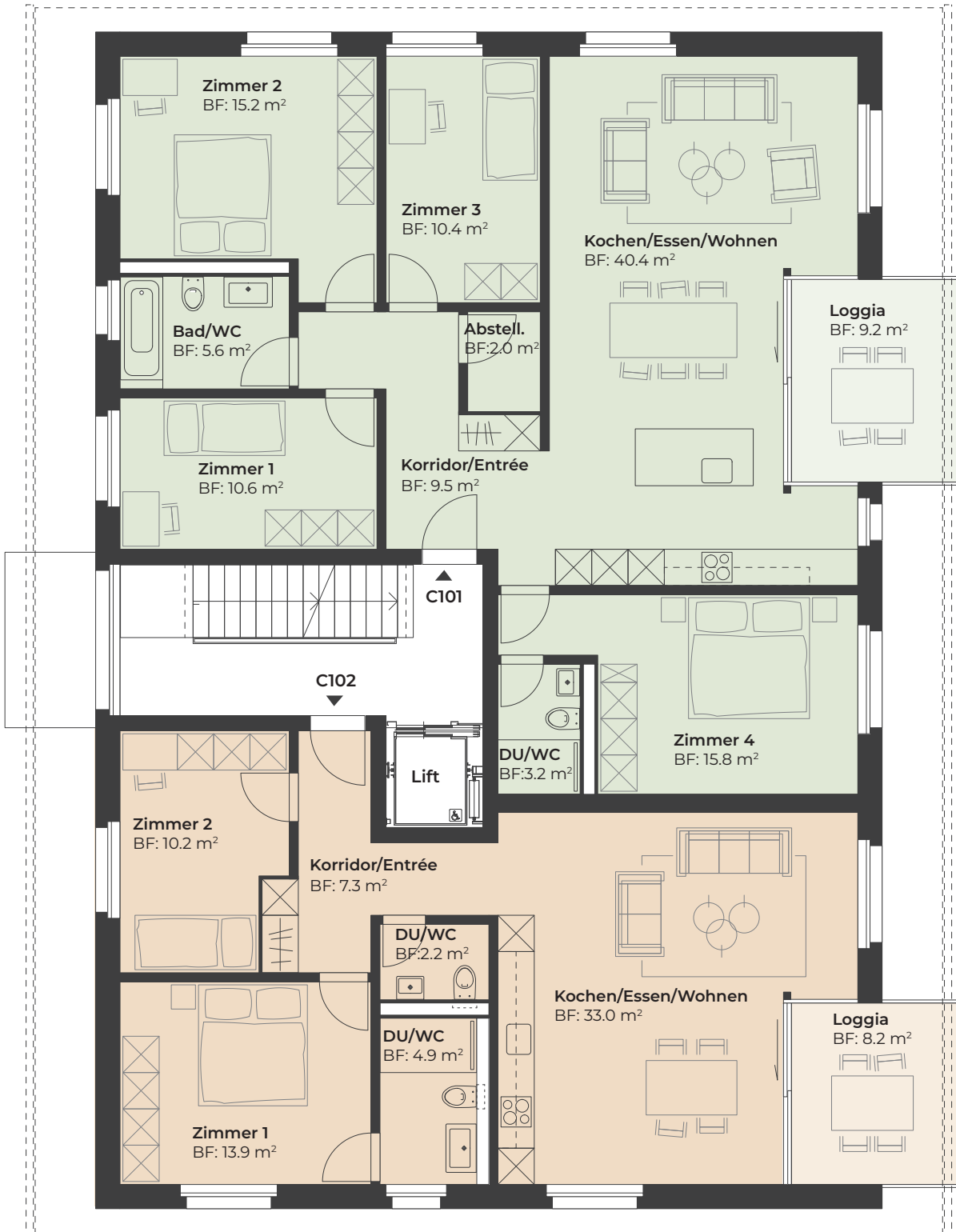
**5.5-Zimmerwohnung**

Wohnfläche 119.8 m<sup>2</sup>  
Aussenfläche 9.2 m<sup>2</sup>

**WHG C102**

**3.5-Zimmerwohnung**

Wohnfläche 76.3 m<sup>2</sup>  
Aussenfläche 8.2 m<sup>2</sup>



Masstab 1:100

